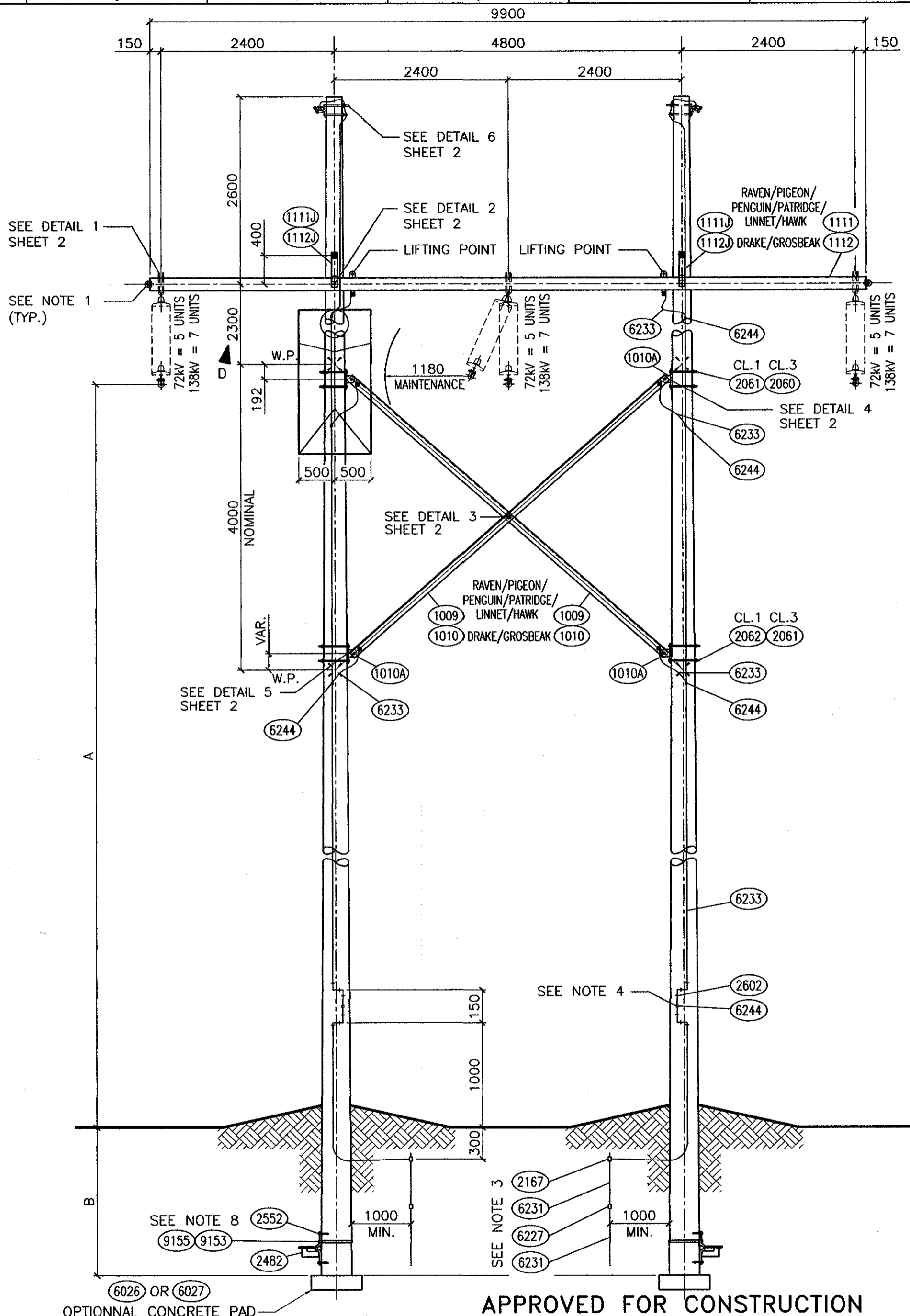


NOTES:

- 1) LIFTING LUGS MAY BE USED TO LIFT CROSS-ARM ASSEMBLY WITH BARE CONDUCTORS IN PLACE. OUTSIDE SET OF LIFTING LUGS MAY ONLY BE USED FOR GUIDING PURPOSES AND NOT FOR LIFTING.
- 2) HAWK CONFIGURATION IS DESIGNED FOR CONDUCTOR HAWK OR SMALLER. DRAKE CONFIGURATION IS DESIGNED FOR CONDUCTOR DRAKE OR SMALLER.
- 3) INSTALL MINIMUM 2 GALVANIZED GROUND RODS PER POLE.
- 4) WHEN SHIELD WIRE IS NOT INSULATED, THE CRIMPIT JOINING THE COPPER AND THE GROUND WIRES WILL BE INSTALLED BY GROUND TESTERS. (AT THIS POINT ONLY).
- 5) REFER TO GENERAL CONSTRUCTION / MAINTENANCE SPECIFICATIONS PLC 13 No.1.
- 6) CLIMBING IS ONLY PERMITTED IN THE MIDDLE OF THE POLE IN LINE WITH POWERLINE C.
- 7) ALL DIMENSIONS ARE IN MILLIMETRES
- 8) THE UPLIFT PLATE ARE SHOWN FOR INFORMATION ONLY. THE FOUNDATION HAS TO BE VALIDATED BY THE LINE ENGINEER.
- 9) REFER TO T07/099 FOR POLE SETTING DETAILS.

POLE LENGTHS	DIMENSIONS		
	A (72 kV)	A (138 kV)	B
50' - 50'	30'-11"	29'-11"	7'-0"
15240 - 15240	9430	9130	2134
55' - 55'	35'-5"	34'-5"	7'-6"
16760 - 16760	10802	10502	2286
60' - 60'	39'-11"	38'-11"	8'-0"
18290 - 18290	12174	11874	2438
65' - 65'	44'-5"	43'-5"	8'-6"
19810 - 19810	13545	13245	2591
70' - 70'	48'-11"	47'-11"	9'-0"
21340 - 21340	14917	14617	2743
75' - 75'	53'-5"	52'-5"	9'-6"
22860 - 22860	16288	15988	2896
80' - 80'	57'-11"	56'-11"	10'-0"
24380 - 24380	17660	17360	3048
85' - 85'	62'-5"	61'-5"	10'-6"
25910 - 25910	19032	18732	3200



OPTIONAL CONCRETE PAD APPROVED FOR CONSTRUCTION

DESIGNED BY X.ZHANG
 DRAWN BY E.GOTANA
 APPR'D BY M.ERETH
 SEALED BY M.ERETH
 DATE (Y-M-D) 2015/09/11

DESIGNED BY J.U
 DRAWN BY A.GATZKE
 APPR'D BY M.ERETH
 SEALED BY M.ERETH
 DATE (Y-M-D) 2015-06-16

DESIGNED BY J. MENARD (CIMA+)
 DRAWN BY J. SAVOIE
 APPR'D BY K. OLECHNOWICZ
 SEALED BY K. OLECHNOWICZ
 DATE (Y-M-D) 2014-08-25

DESIGNED BY J. MENARD (CIMA+)
 DRAWN BY J. SAVOIE
 APPR'D BY K. OLECHNOWICZ
 SEALED BY K. OLECHNOWICZ
 DATE (Y-M-D) 2014-08-12

ENGINEERING SEAL
 PROFESSIONAL ENGINEER
 M.G. ERETH
 MEMBER 6861
 2015/09/11
 YR. REG. DAY
 SASKATCHEWAN

DRAFTING DEPT.
 DRAWN BY J. SAVOIE
 CHECKED BY
 DATE (Y-M-D) 2013-11-22

DESIGN DEPT.
 DESIGNED BY J. MENARD (CIMA+)
 CHECKED BY K. OLECHNOWICZ
 APPROVED BY K. OLECHNOWICZ
 SEALED BY K. OLECHNOWICZ
 DATE (Y-M-D) 2013-11-22

SaskPower INTERNAL USE ONLY
 72/138 kV
 STEEL CROSSARM AND CROSS BRACE
 TANGENT STRUCTURE (0°-2°)
 OUTLINE
 ASSEMBLY

AUTOCAD SOURCE FILENAME:
 D14_902_2SW_01.DWG
 PLOT DATE: 2015-09-11 PAPER: C
 PLOT TIME: 10:48 AM
 PLOTTED BY: AGATZKE
 SCALE: 1:50 (U.O.S.)
 DRAWING No.
D14
902-2SW
 SHEET 1 OF 15 REV. D