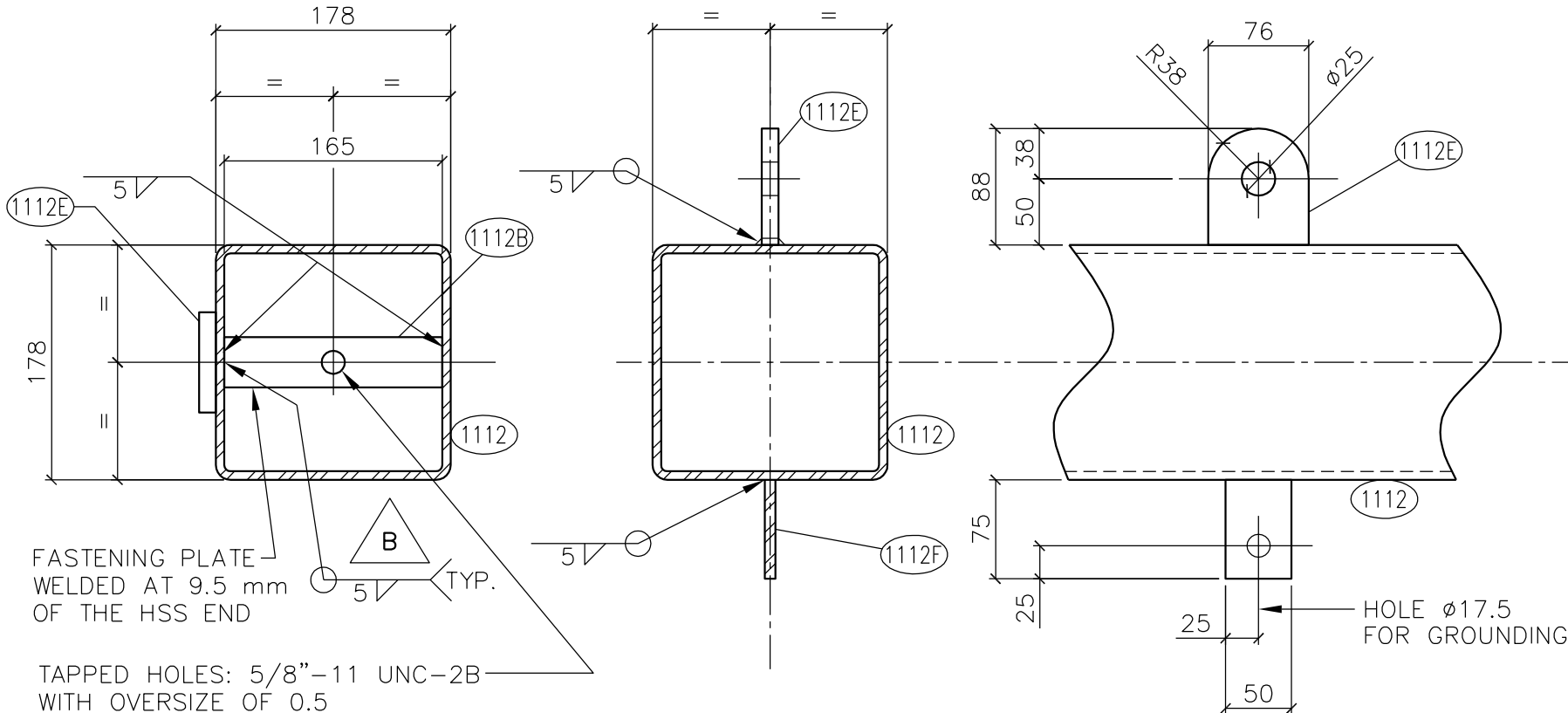


NOTES:

- FOR FABRICATION NOTES, SEE SHEET 4.
- STEEL STRAPS SHALL BE BOUND TOGETHER BY STEEL WIRE, AND THEN ATTACHED TO THE STEEL ARM WITH PLASTIC WRAP. ALL PARTS SHALL BE ADEQUATELY SEPARATED BY BLOCKING OR PADDING TO PREVENT ABRASION DURING TRANSIT.

KIT DESCRIPTION:

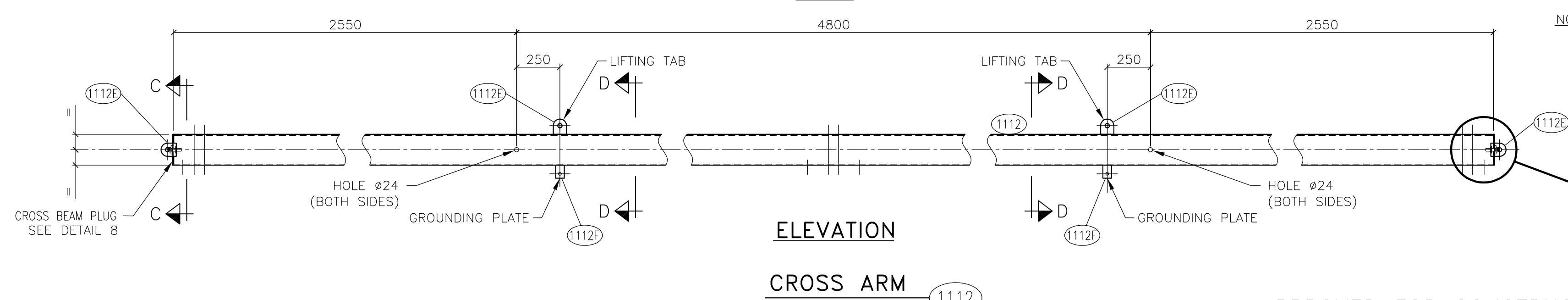
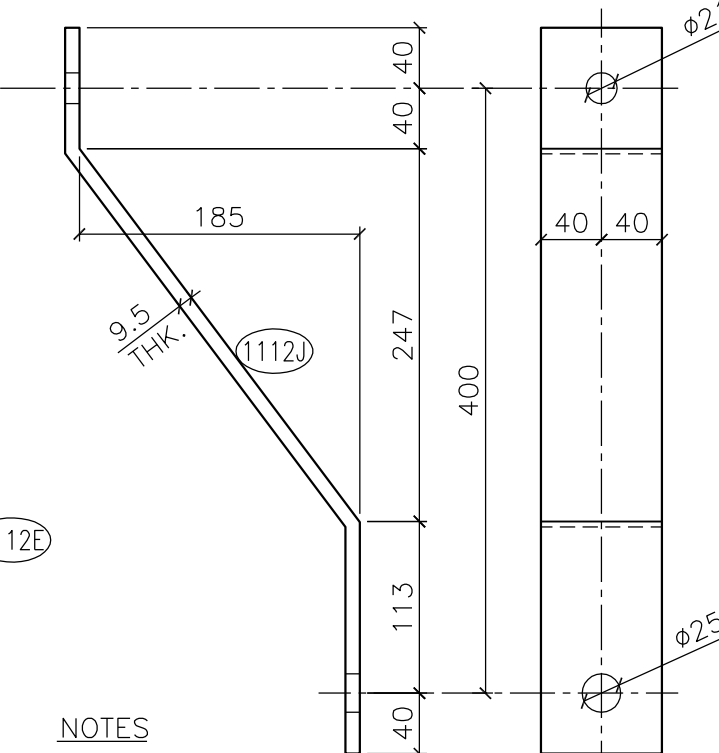
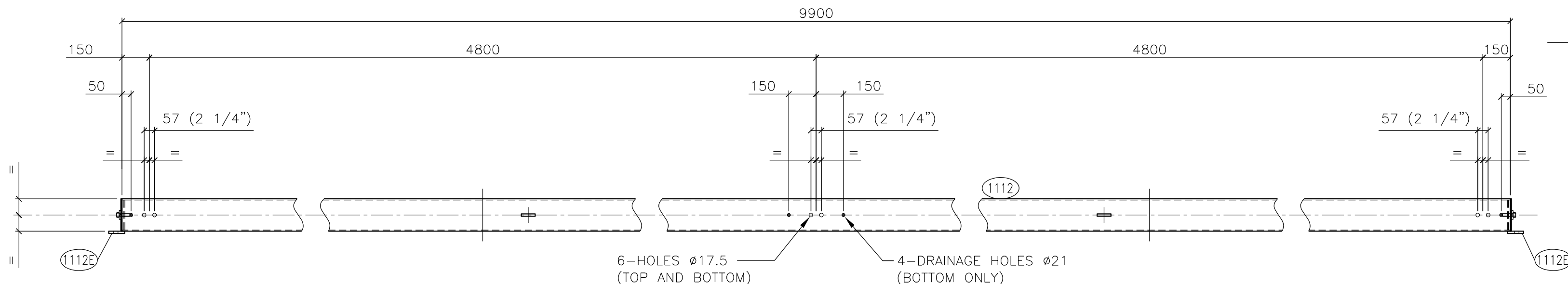
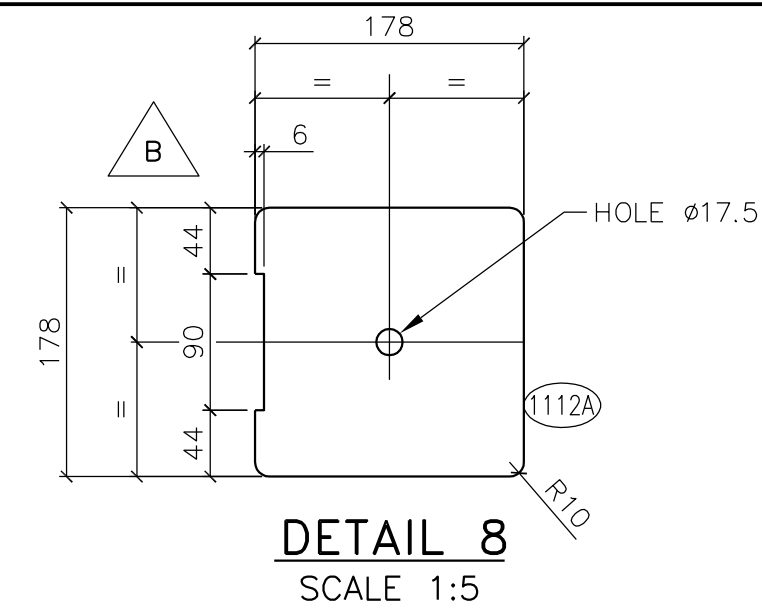
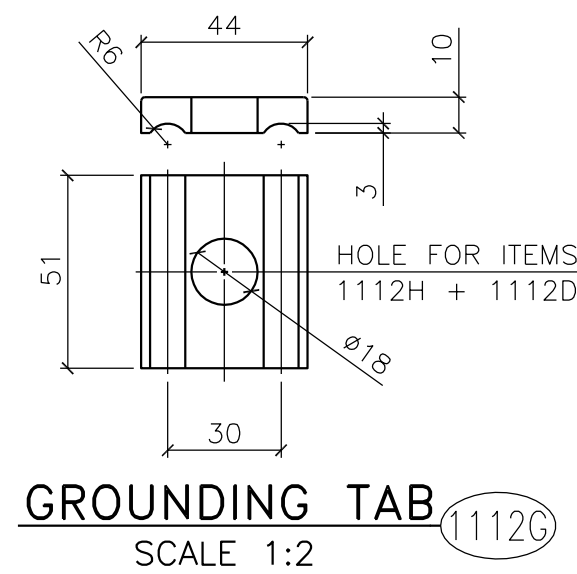
STEEL CROSS ARM: ASSEMBLE 2 GROUNDING TABS (MARK 1112G) TO GROUNDING PLATES ON TUBE ASSEMBLY (MARK 1112F) WITH 5/8" LOCK WASHER (MARK 1112D) AND 5/8" x 2" HEXAGONAL BOLT (MARK 1112H).
 ASSEMBLE 2 CROSS BEAM PLUGS (MARK 1112A) TO FASTENING PLATES ON TUBE ASSEMBLY (MARK 1112B) WITH 5/8" x 1 3/4" BOLT (MARK 1112C) AND 5/8" LOCK WASHER (MARK 1112D).



FASTENING PLATE WELDED AT 9.5 mm OF THE HSS END

TAPPED HOLES: 5/8"-11 UNC-2B WITH OVERSIZE OF 0.5
 DRILL TOLERANCES: +0.00mm, -0.20mm
 REFINISH TAP AFTER GALVANIZATION

| STEEL CROSS ARM FOR DRAKE/GROSBEAK KIT – HSS 178x178x6.4 – 12945 | | | | | |
|--|-----|---------------------------------------|--------|-----------------------------------|------------------------------|
| No. | QTY | DESCRIPTION | LENGTH | UNIT WEIGHT (kg) +3.5% GALV. | TOTAL WEIGHT(kg) +3.5% GALV. |
| 1112 | 1 | CROSS ARM – HSS 178x178x6.4 | 9900 | 342.23 | 342.23 |
| 1112A | 2 | CROSS BEAM PLUG – PL 6.4x178 | 178 | 1.63 | 3.26 |
| 1112B | 2 | FASTENING PLATE – PL 6.4x38.1 | 165 | 0.33 | 0.66 |
| 1112C | 2 | HEXAGONAL BOLT 5/8" x 1 3/4" Lg. | – | 0.14 | 0.28 |
| 1112D | 4 | LOCKWASHER FOR BOLT 5/8" | – | 0.01 | 0.04 |
| 1112E | 4 | LIFTING TAB – PL 12.7x76 | 88 | 0.69 | 2.76 |
| 1112F | 2 | GROUNDING PLATE – PL 7.9x50 | 75 | 0.24 | 0.48 |
| 1112G | 2 | GROUNDING TAB – PL 9.5x44 | 51 | 0.17 | 0.34 |
| 1112H | 2 | HEXAGONAL BOLT 5/8" x 2" Lg. WITH NUT | – | 0.14 | 0.28 |
| 1112J | 2 | CROSS ARM – STEEL STRAP – PL 9.5x80 | 542 | 3.35 | 6.70 |
| | | | | TOTAL WEIGHT FOR A SET: 357.03 kg | |



APPROVED FOR CONSTRUCTION

SaskPower INTERNAL USE ONLY
 72/138 kV
 STEEL CROSSARM AND CROSS BRACE
 TANGENT STRUCTURE (0°-2°)
 CROSSARM FABRICATION (DRAKE/GROSBEAK)
 FABRICATION

AUTOCAD SOURCE FILENAME:
 D14-902-2SW-06 RB.DWG
 PLOT DATE: 2015-01-09 PAPER: C
 PLOT TIME: 11:13
 PLOTTED BY: JEROME.SAVOIE
 SCALE: 1:20 (U.O.S.)
 DRAWING No.
D14
902-2SW
 SHEET 6 OF 15 REV. B

B DESIGNED BY J. MÉNARD (CIMA+)
 DRAWN BY J. SAVOIE
 APPR'D BY K. OLECHNOWICZ
 SEALED BY K. OLECHNOWICZ
 DATE (Y-M-D) 2015-01-12
 REVISION FOR SHEET NUMBER.
 LIFTING TAB WELDING MODIFIED.
 CROSS BEAM PLUG MODIFIED.

A DESIGNED BY J. MÉNARD (CIMA+)
 DRAWN BY J. SAVOIE
 APPR'D BY K. OLECHNOWICZ
 SEALED BY K. OLECHNOWICZ
 DATE (Y-M-D) 2014-08-12
 GENERAL REVISION

ENGINEERING SEAL

DRAFTING DEPT.
 DRAWN BY J. SAVOIE
 CHECKED BY
 DATE (Y-M-D) 2013-11-22

DESIGN DEPT.
 DESIGNED BY J. MÉNARD (CIMA+)
 CHECKED BY K. OLECHNOWICZ
 APPROVED BY K. OLECHNOWICZ
 SEALED BY K. OLECHNOWICZ
 DATE (Y-M-D) 2013-11-22

AutoCAD